

**BASP1 Antibody (Center)**  
**Affinity Purified Rabbit Polyclonal Antibody (Pab)**  
**Catalog # AP9970a****Specification**

---

**BASP1 Antibody (Center) - Product Information**

Application	WB,E
Primary Accession	<a href="#">P80723</a>
Reactivity	Human
Host	Rabbit
Clonality	Polyclonal
Isotype	Rabbit IgG
Antigen Region	123-150

**BASP1 Antibody (Center) - Additional Information****Gene ID** 10409**Other Names**

Brain acid soluble protein 1, 22 kDa neuronal tissue-enriched acidic protein, Neuronal axonal membrane protein NAP-22, BASP1, NAP22

**Target/Specificity**

This BASP1 antibody is generated from rabbits immunized with a KLH conjugated synthetic peptide between 123-150 amino acids from the Central region of human BASP1.

**Dilution**

WB~~1:1000

E~~Use at an assay dependent concentration.

**Format**

Purified polyclonal antibody supplied in PBS with 0.09% (W/V) sodium azide. This antibody is purified through a protein A column, followed by peptide affinity purification.

**Storage**

Maintain refrigerated at 2-8°C for up to 2 weeks. For long term storage store at -20°C in small aliquots to prevent freeze-thaw cycles.

**Precautions**

BASP1 Antibody (Center) is for research use only and not for use in diagnostic or therapeutic procedures.

**BASP1 Antibody (Center) - Protein Information****Name** BASP1**Synonyms** NAP22

**Cellular Location**

Cell membrane; Lipid-anchor. Cell projection, growth cone. Note=Associated with the membranes of growth cones that form the tips of elongating axons

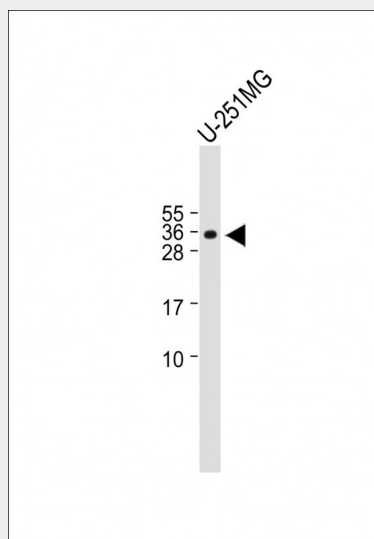
**Tissue Location**

Brain.

**BASP1 Antibody (Center) - Protocols**

Provided below are standard protocols that you may find useful for product applications.

- [Western Blot](#)
- [Blocking Peptides](#)
- [Dot Blot](#)
- [Immunohistochemistry](#)
- [Immunofluorescence](#)
- [Immunoprecipitation](#)
- [Flow Cytometry](#)
- [Cell Culture](#)

**BASP1 Antibody (Center) - Images**

Anti-BASP1 Antibody (Center) at 1:1000 dilution + U-251 MG whole cell lysate Lysates/proteins at 20 µg per lane. Secondary Goat Anti-Rabbit IgG, (H+L), Peroxidase conjugated at 1/10000 dilution. Predicted band size : 23 kDa Blocking/Dilution buffer: 5% NFDM/TBST.

**BASP1 Antibody (Center) - Background**

BASP1 encodes a membrane bound protein with several transient phosphorylation sites and PEST motifs. Conservation of proteins with PEST sequences among different species supports their functional significance. PEST sequences typically occur in proteins with high turnover rates. Immunological characteristics of this protein are species specific. This protein also undergoes N-terminal myristoylation.

**BASP1 Antibody (Center) - References**

Tsunedomi, R., et al. Int. J. Oncol. 36(1):205-212(2010)

Behan, A.T., et al. Mol. Psychiatry 14(6):601-613(2009)  
Uzumcu, A., et al. J Genet Genomics 36(4):251-256(2009)  
Green, L.M., et al. Nucleic Acids Res. 37(2):431-440(2009)